

# LJMU academic calendar 2011-2012

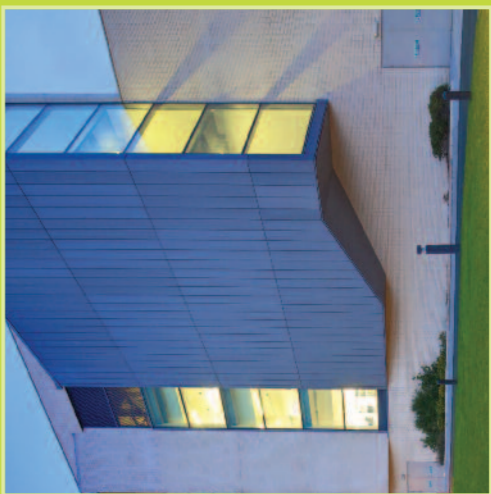
2011

|           | mon | tue         | wed | thu          | fri | sat | sun | mon          | tue | wed | thu | fri | sat | sun | mon           | tue | wed | thu | fri | sat | sun | mon           | tue | wed | thu | fri | sat | sun | mon                        | tue             |    |    |    |    |    |              |
|-----------|-----|-------------|-----|--------------|-----|-----|-----|--------------|-----|-----|-----|-----|-----|-----|---------------|-----|-----|-----|-----|-----|-----|---------------|-----|-----|-----|-----|-----|-----|----------------------------|-----------------|----|----|----|----|----|--------------|
| AUGUST    | 1   | 2           | 3   | 4            | 5   | 6   | 7   | 8            | 9   | 10  | 11  | 12  | 13  | 14  | 15            | 16  | 17  | 18  | 19  | 20  | 21  | 22            | 23  | 24  | 25  | 26  | 27  | 28  | 29<br>Bank Hol.            | 30              | 31 |    |    |    |    |              |
| SEPTEMBER |     |             |     | 1            | 2   | 3   | 4   | 5            | 6   | 7   | 8   | 9   | 10  | 11  | 12            | 13  | 14  | 15  | 16  | 17  | 18  | 19<br>Week 1  | 20  | 21  | 22  | 23  | 24  | 25  | 26<br>Week 2               | 27              | 28 | 29 | 30 |    |    |              |
| OCTOBER   |     |             |     |              |     | 1   | 2   | 3<br>Week 3  | 4   | 5   | 6   | 7   | 8   | 9   | 10<br>Week 4  | 11  | 12  | 13  | 14  | 15  | 16  | 17<br>Week 5  | 18  | 19  | 20  | 21  | 22  | 23  | 24<br>Week 6               | 25              | 26 | 27 | 28 | 29 | 30 | 31<br>Week 7 |
| NOVEMBER  |     | 1<br>Week 7 | 2   | 3            | 4   | 5   | 6   | 7<br>Week 8  | 8   | 9   | 10  | 11  | 12  | 13  | 14<br>Week 9  | 15  | 16  | 17  | 18  | 19  | 20  | 21<br>Week 10 | 22  | 23  | 24  | 25  | 26  | 27  | 28<br>Week 11              | 29              | 30 |    |    |    |    |              |
| DECEMBER  |     |             |     | 1<br>Week 11 | 2   | 3   | 4   | 5<br>Week 12 | 6   | 7   | 8   | 9   | 10  | 11  | 12<br>Week 13 | 13  | 14  | 15  | 16  | 17  | 18  | 19<br>Week 14 | 20  | 21  | 22  | 23  | 24  | 25  | 26<br>Week 15<br>Bank Hol. | 27<br>Bank Hol. | 28 | 29 | 30 | 31 |    |              |

2012

| JANUARY  |  |              |              |              |   |   | 1 | 2<br>Week 16<br>Bank Hol. | 3              | 4 | 5  | 6              | 7  | 8  | 9<br>Week 17              | 10 | 11 | 12 | 13 | 14 | 15 | 16<br>Week 18 | 17 | 18 | 19 | 20 | 21 | 22 | 23<br>Week 19 | 24 | 25 | 26 | 27 | 28 | 29 | 30 | 31<br>Week 20 |
|----------|--|--------------|--------------|--------------|---|---|---|---------------------------|----------------|---|----|----------------|----|----|---------------------------|----|----|----|----|----|----|---------------|----|----|----|----|----|----|---------------|----|----|----|----|----|----|----|---------------|
| FEBRUARY |  |              | 1<br>Week 20 | 2            | 3 | 4 | 5 | 6<br>Week 21              | 7              | 8 | 9  | 10             | 11 | 12 | 13<br>Week 22             | 14 | 15 | 16 | 17 | 18 | 19 | 20<br>Week 23 | 21 | 22 | 23 | 24 | 25 | 26 | 27<br>Week 24 | 28 | 29 |    |    |    |    |    |               |
| MARCH    |  |              |              | 1<br>Week 24 | 2 | 3 | 4 | 5<br>Week 25              | 6              | 7 | 8  | 9              | 10 | 11 | 12<br>Week 26             | 13 | 14 | 15 | 16 | 17 | 18 | 19<br>Week 27 | 20 | 21 | 22 | 23 | 24 | 25 | 26<br>Week 28 | 27 | 28 | 29 | 30 | 31 |    |    |               |
| APRIL    |  |              |              |              |   |   | 1 | 2<br>Week 29              | 3              | 4 | 5  | 6<br>Bank Hol. | 7  | 8  | 9<br>Week 30<br>Bank Hol. | 10 | 11 | 12 | 13 | 14 | 15 | 16<br>Week 31 | 17 | 18 | 19 | 20 | 21 | 22 | 23<br>Week 32 | 24 | 25 | 26 | 27 | 28 | 29 | 30 | 31<br>Week 33 |
| MAY      |  | 1<br>Week 33 | 2            | 3            | 4 | 5 | 6 | 7<br>Bank Hol.            | 8              | 9 | 10 | 11             | 12 | 13 | 14                        | 15 | 16 | 17 | 18 | 19 | 20 | 21            | 22 | 23 | 24 | 25 | 26 | 27 | 28            | 29 | 30 | 31 |    |    |    |    |               |
| JUNE     |  |              |              |              | 1 | 2 | 3 | 4<br>Bank Hol.            | 5<br>Bank Hol. | 6 | 7  | 8              | 9  | 10 | 11                        | 12 | 13 | 14 | 15 | 16 | 17 | 18            | 19 | 20 | 21 | 22 | 23 | 24 | 25            | 26 | 27 | 28 | 29 | 30 |    |    |               |
| JULY     |  |              |              |              |   | 1 | 2 | 3                         | 4              | 5 | 6  | 7              | 8  | 9  | 10                        | 11 | 12 | 13 | 14 | 15 | 16 | 17            | 18 | 19 | 20 | 21 | 22 | 23 | 24            | 25 | 26 | 27 | 28 | 29 | 30 | 31 |               |

**ABD** - Assessment Board Deadline. **MRD** - Module Registration Deadline The final date for any changes to module registrations for the current period to be entered into the system. Students should not be permitted to change module registrations after this date. The examination timetable will be based on module registrations as of this date. **MD** - Mark Deadline The date by which all marks for all assessments are recorded on the system. **MAB** - Module Assessment Board Deadline MABs can be scheduled any time prior to, or including, this deadline, but not later. **RD** - Results Deadline The date by which all results will be published. **PAB** - Programme Assessment Board Any variation from the designated dates should be notified to Academic Planning and Information. **BH** - Bank Holiday



**JMU** Liverpool

**academic calendar  
2011 - 2012**