



My Working Day



My Working Day as a: Graduate CE&I Engineer

Organisation: Sellafield Ltd

Type of organisation: Nuclear Decommissioning and Reprocessing

Subject of study: Electrical and Electronic Engineering

Job title: Graduate CE&I Engineer

In which country are you currently working?: UK

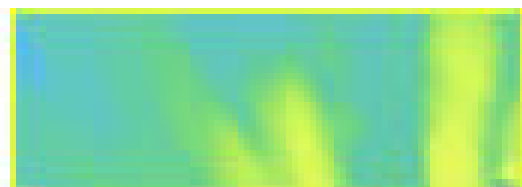
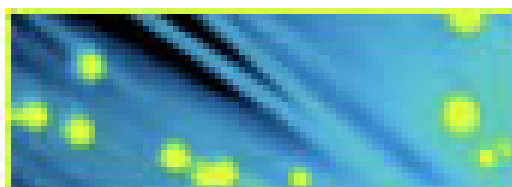
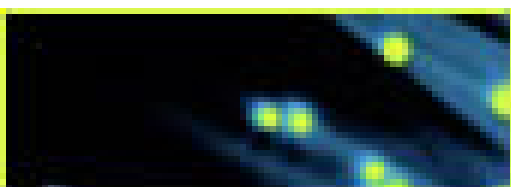
What does your job involve?:

I currently act as support to one of the many design engineering asset groups throughout our company. Every asset group will be looking after several projects at any one time so there are always a wide variety of tasks to get involved with. Recently I have been involved with some PLC replacement projects. During these projects I have done everything from write the proposal for the replacement system to actually installing the systems themselves.

Being a graduate here also brings with it certain responsibilities and I am often sent on training courses that will help me meet competencies for my Chartered Engineer status.

My typical day:

I usually arrive between 8am and half past. Then, depending on how Liverpool FC got on that weekend, I either have a bit of banter with the United fans in the office or keep my head down and go straight to my desk. It's usually the latter! I check my emails so that I can respond to any urgent ones and prioritise the others. I also check my calendar to see which meetings I am required to attend that day. If I am free, I will carry on with whichever project I happen to be working on at that time. The atmosphere here is very relaxed and although there is no formal morning break everyone manages to fit in the odd ten minutes for a quick tea or coffee. At 12.30 I go for lunch and I usually meet up with the other graduates at the cafe. More often than not I will have a meeting of some kind in the afternoon; these can sometimes be a welcome break from the computer screen and a good way to break up the day. At Sellafield Ltd we have a flexi-time system in place for our working hours so as long as we fulfil our weekly hours; we can arrive/leave whenever we want (within reason). This is ideal when you're having one of those days and you really want to get home ASAP....not that you have them often at Sellafield!



Three things that I like about my job:

(1): The Flexi-time is great because you can really put the time in when a piece of work needs finishing and you are rewarded with time off when it suits.

(2): No two days are ever the same. I may have a certain task that will span over a few days but generally there are always new opportunities to get involved in a wide variety of tasks.

(3): The money! I'd be lying if I said I'd do the job for free but we are quite well compensated for our hard work here at Sellafield.

Three things that I'm not quite so keen on:

(1): At times the hours can be long but as I mentioned earlier the flexi-time means any extra time you put in, you get back in the form of credit hours to use at your leisure.

(2): Sometimes I have to work away up at the site in Sellafield. This is OK for a few days but it can get a bit much if you have to spend a few months there.

Key points in my career development to date:

The main key points in my career development to date would probably be graduating from LJMU and getting my job here at Sellafield. The next markers I am aiming for are gaining my MSc and achieving CEng status.

What I wish I'd known when I was a student:

I wish I would have known how much easier having a Masters makes life in an engineering career. Then maybe I would have tried a little harder in the final years of my degree so that I could continue and achieve a MEng.

Tips or advice for those looking for jobs:

I think it is important to make sure you know as much about the company you are applying for as possible as they are bound to ask you something about themselves. It is also very important to appear confident at the interview. The assessors will be looking for a candidate they can see fitting in to the company so it is vital that you can communicate well with them.

