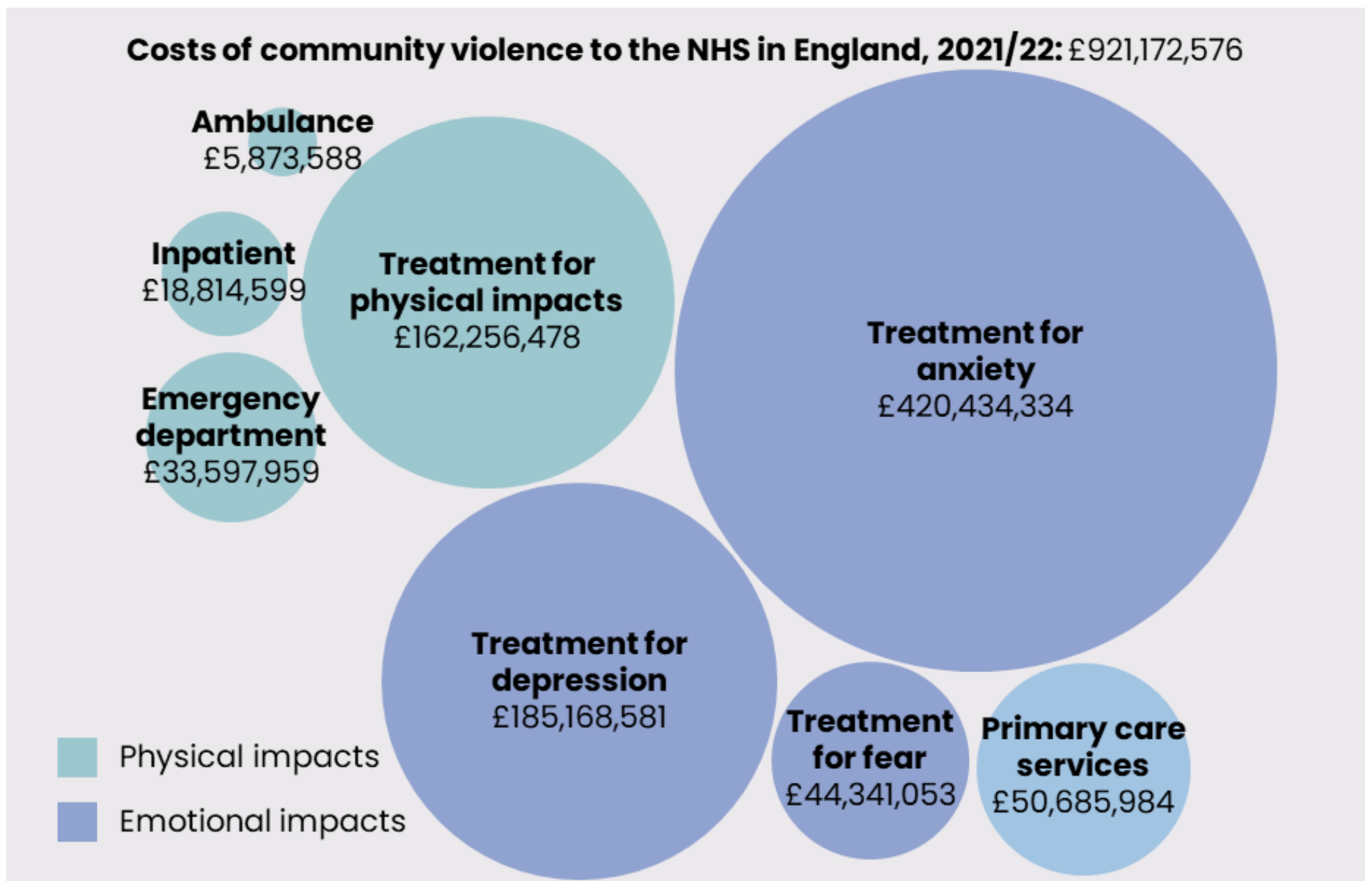


COSTS OF VIOLENCE TO THE NHS IN ENGLAND IN 2021/22

Violence in the community increases the need for healthcare services to treat physical and emotional injuries and violence also threatens the safety, health, and wellbeing of healthcare workers. This infographic highlights the economic costs imposed on the NHS in England by violence.

COSTS OF COMMUNITY VIOLENCE

We have considered the direct costs incurred by the NHS in England in treating people who are victims and survivors of interpersonal violence. Cost categories relating to indirect costs, such as lost work productivity among victims and survivors of community violence, are not included.



COSTS OF VIOLENCE, HARASSMENT AND ABUSE TOWARDS STAFF

We have considered the impacts of both direct and indirect costs on the NHS in England, including costs arising from sickness absence, employee turnover, diminished productivity, and sickness presenteeism.

