

# SPSS AMOS Home Use Software – Installation Instructions

Allow 10 – 15 minutes to complete.

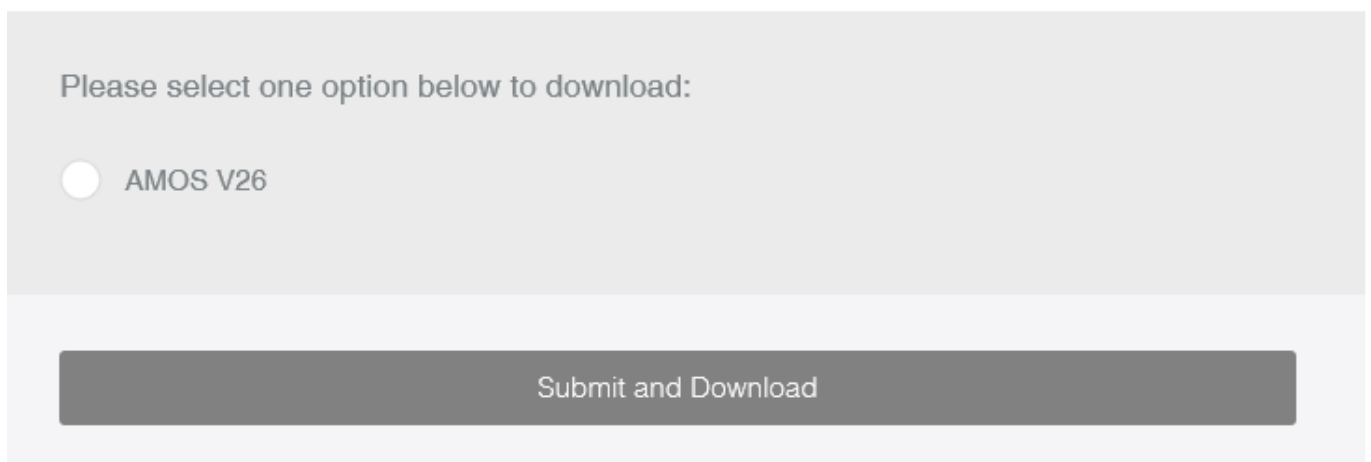
## Installing SPSS AMOS for Home Use on Windows

LJMU is licenced to offer a number of applications to LJMU computer users to install and use on their own PC for as long as they are a registered user at LJMU. This guide is for installing the SPSS AMOS software on a machine running 64 bit Windows.

## Downloading SPSS AMOS

SPSS AMOS web page is here: <https://www.ljmu.ac.uk/ithelp/software-for-staff-and-students/spss-amos-add-in>

You should see the following information on the webpage:



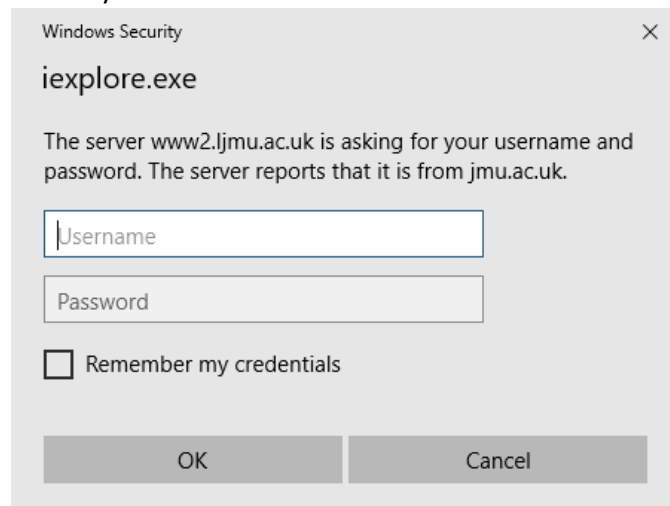
Please select one option below to download:

AMOS V26

Submit and Download

Click on the AMOS V26 and click Submit and Download

You will then be prompted to enter your LJMU username and Password



Windows Security

iexplore.exe

The server www2.ljmu.ac.uk is asking for your username and password. The server reports that it is from jmu.ac.uk.

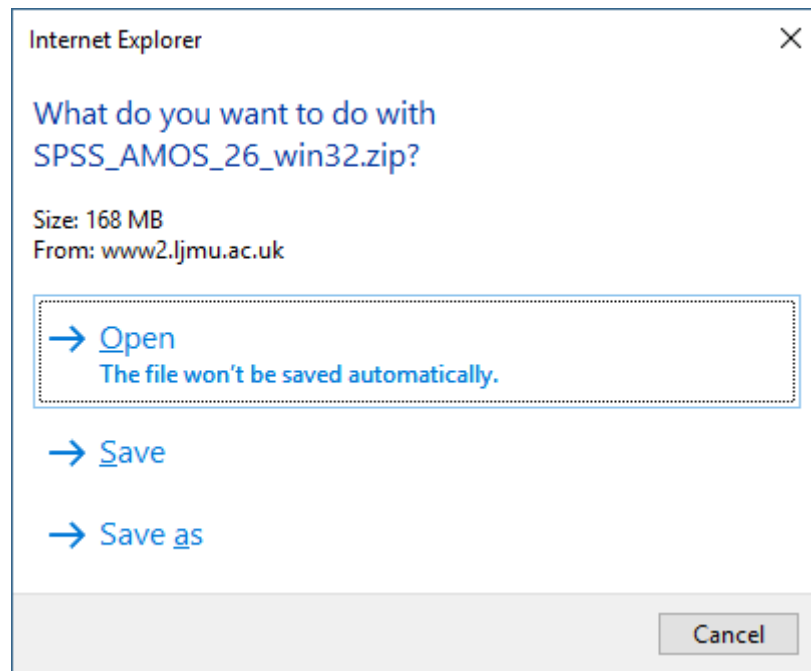
Username

Password

Remember my credentials

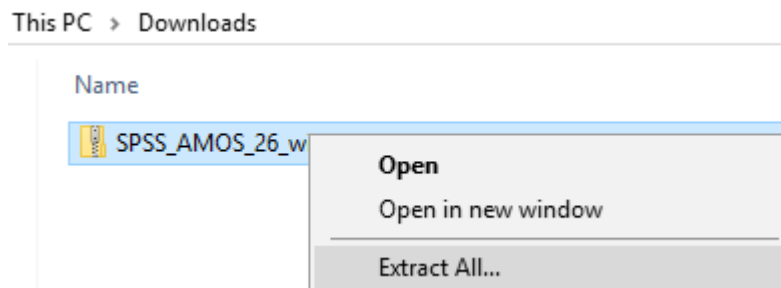
OK Cancel

Depending on which browser you are using , IE / Chrome, you may or may not see this

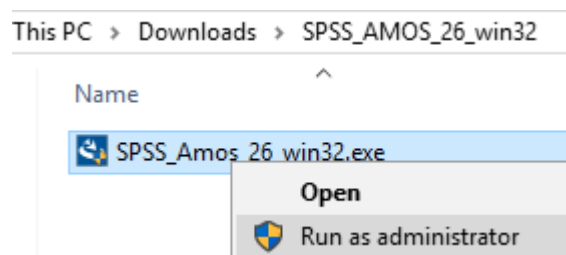


Choose to Save it.

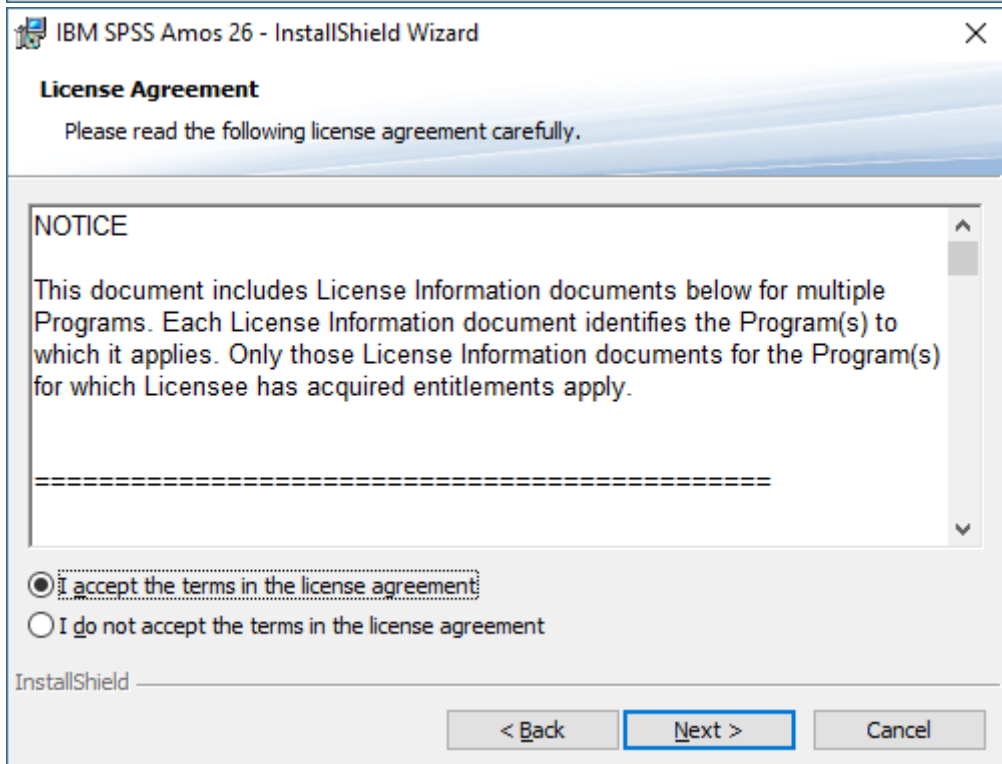
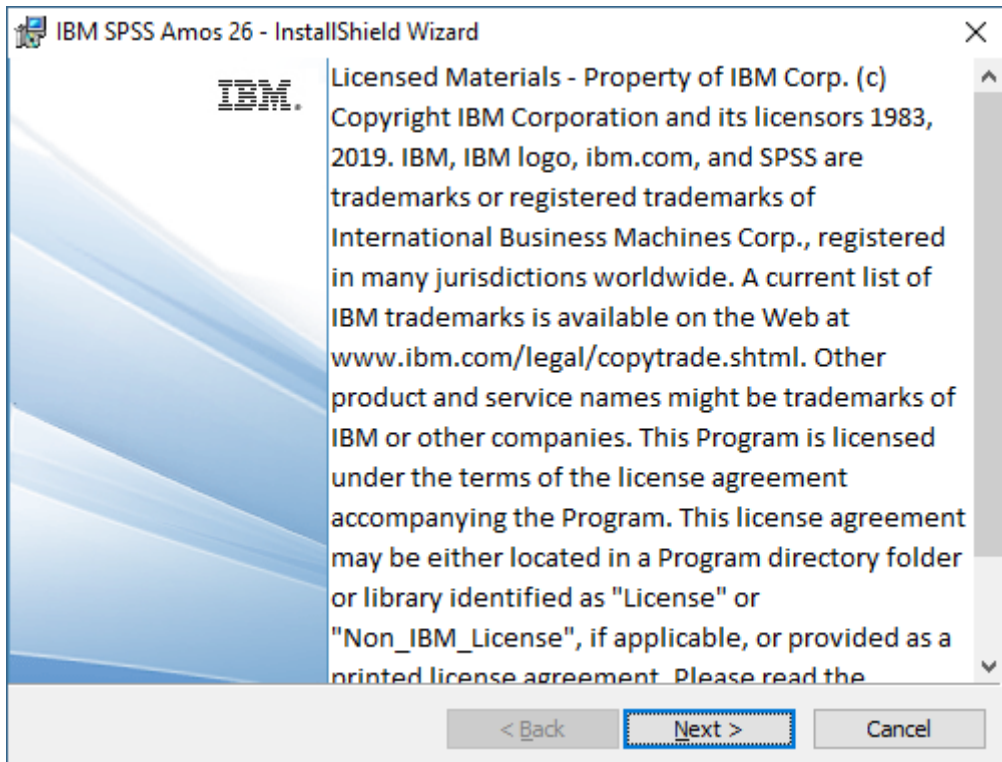
Once downloaded, Right Click on the file and choose Extract All:

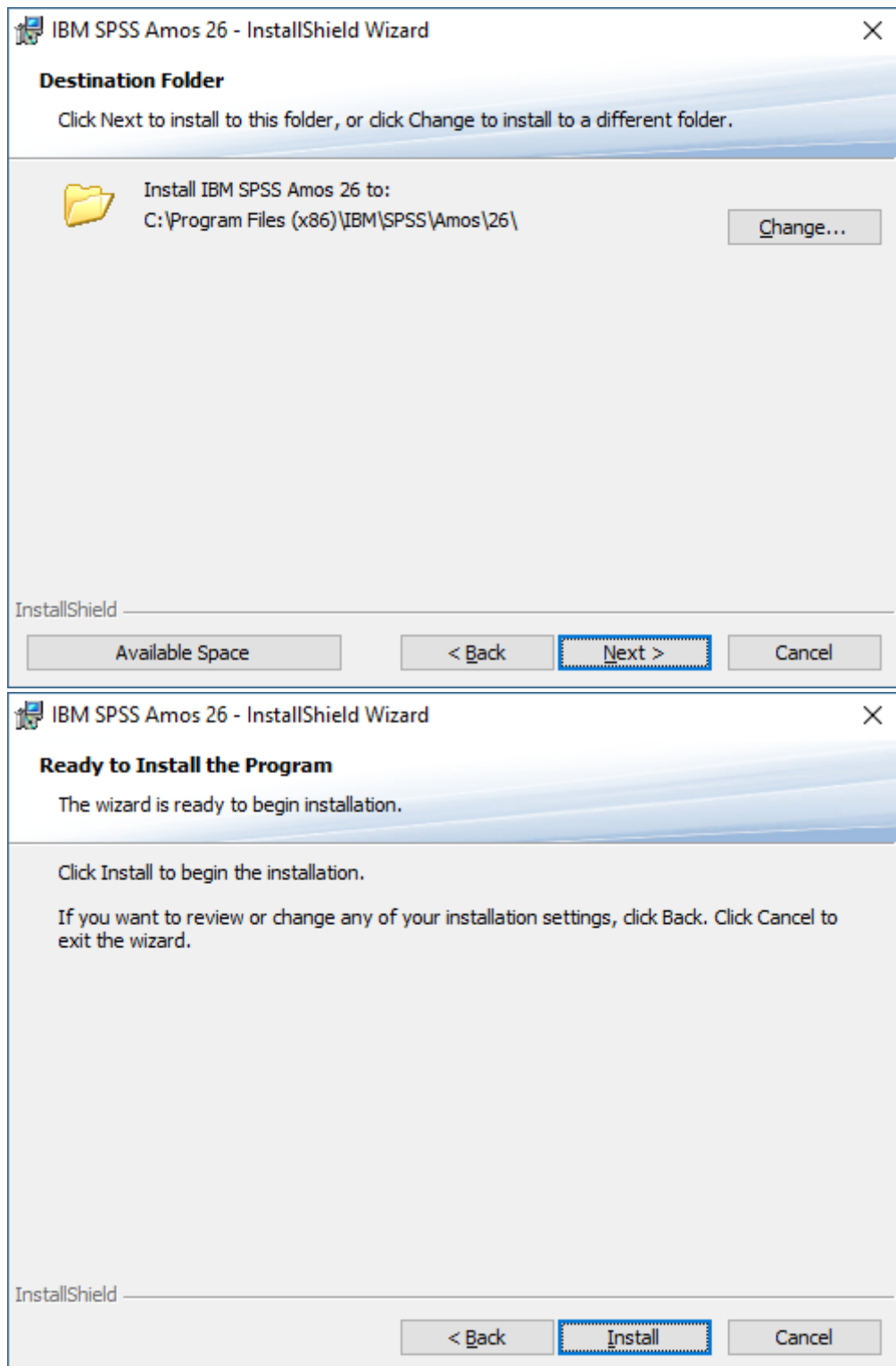


Once extracted, browse to SPSS\_AMOS\_26\_win32 and right click and choose Run as Administrator:

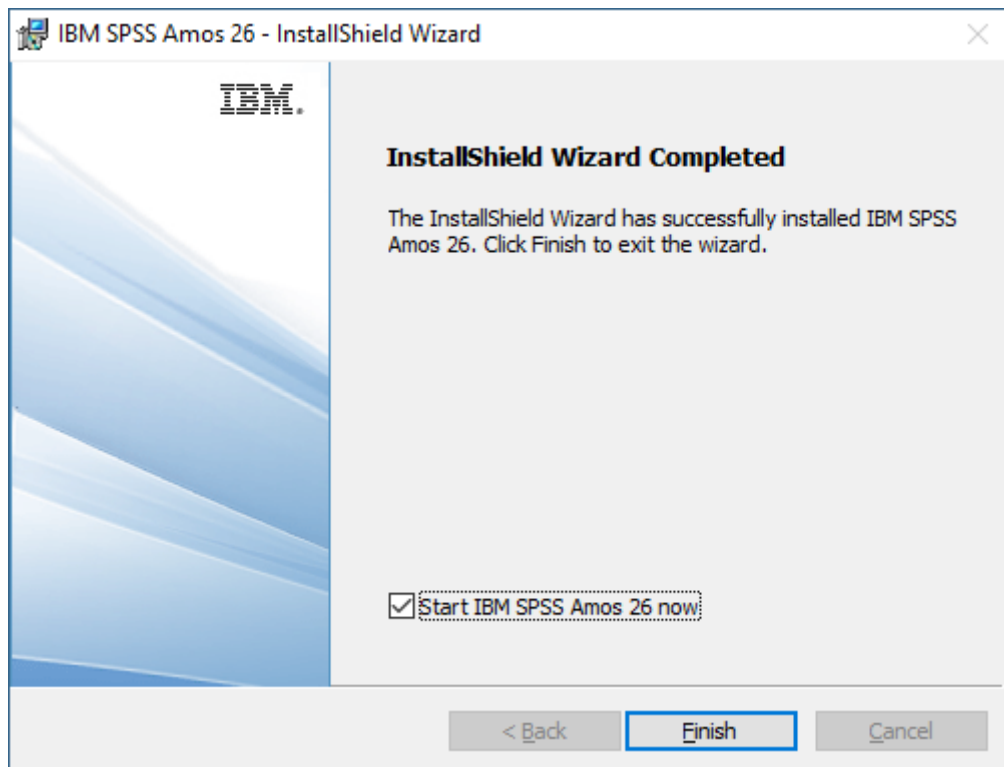


Setup will now start (it could take a minute for screen below to appear and as long as you have administrative rights on your device:





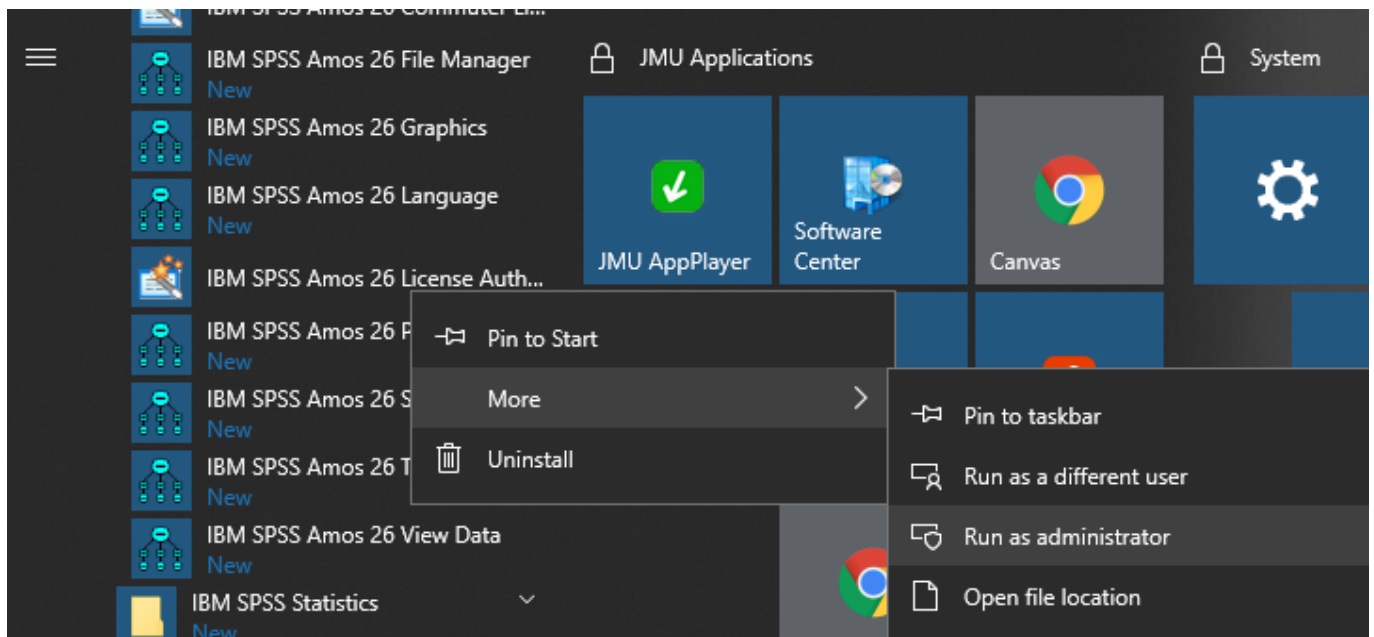
The install will now start. After which you will see:



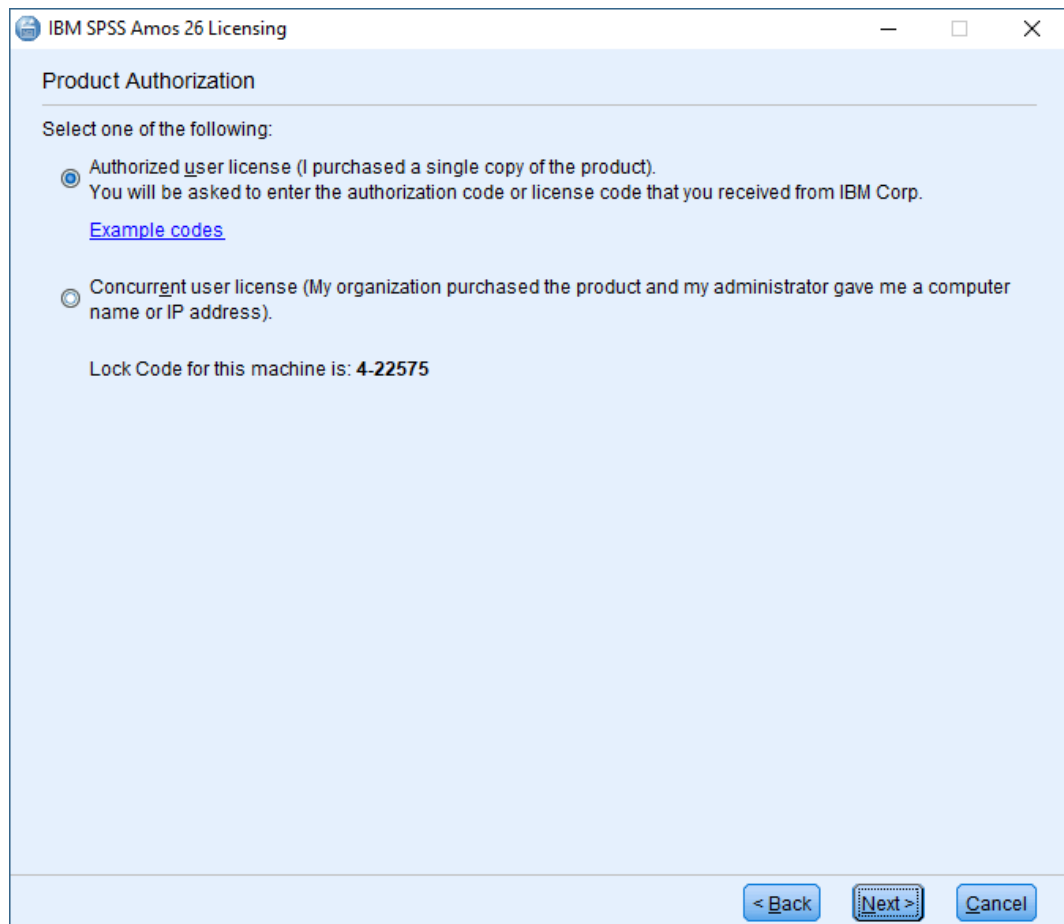
**UNTICK !! the Start IBM SPSS AMOS 26 click Finish**

Ensure the top option , Authorized user license is ticked and click Next

From the start menu browse and find the Amos folder and then right click and run as Administrator the shortcut titled: **IBM SPSS Amos 26 License Authorization Wizard** [5<sup>th</sup> shortcut from the top within the **AMOS folder**]



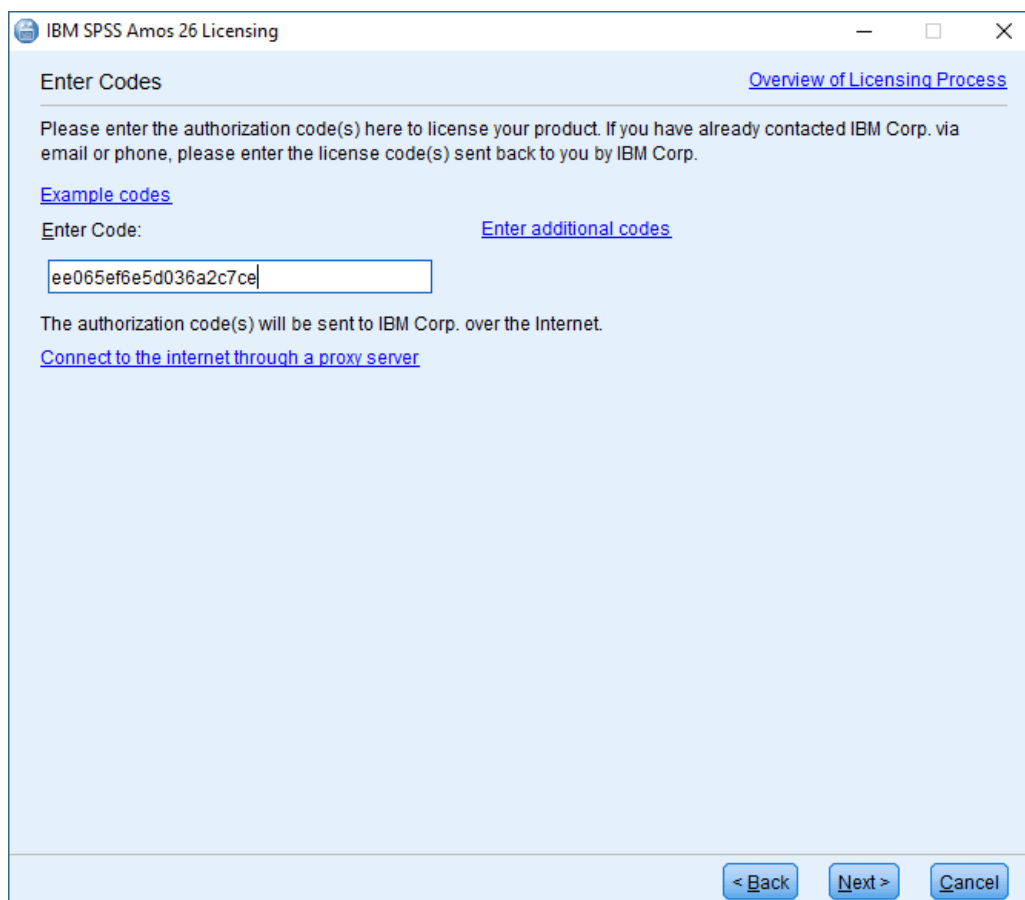
Click Next on the first screen about License Status.



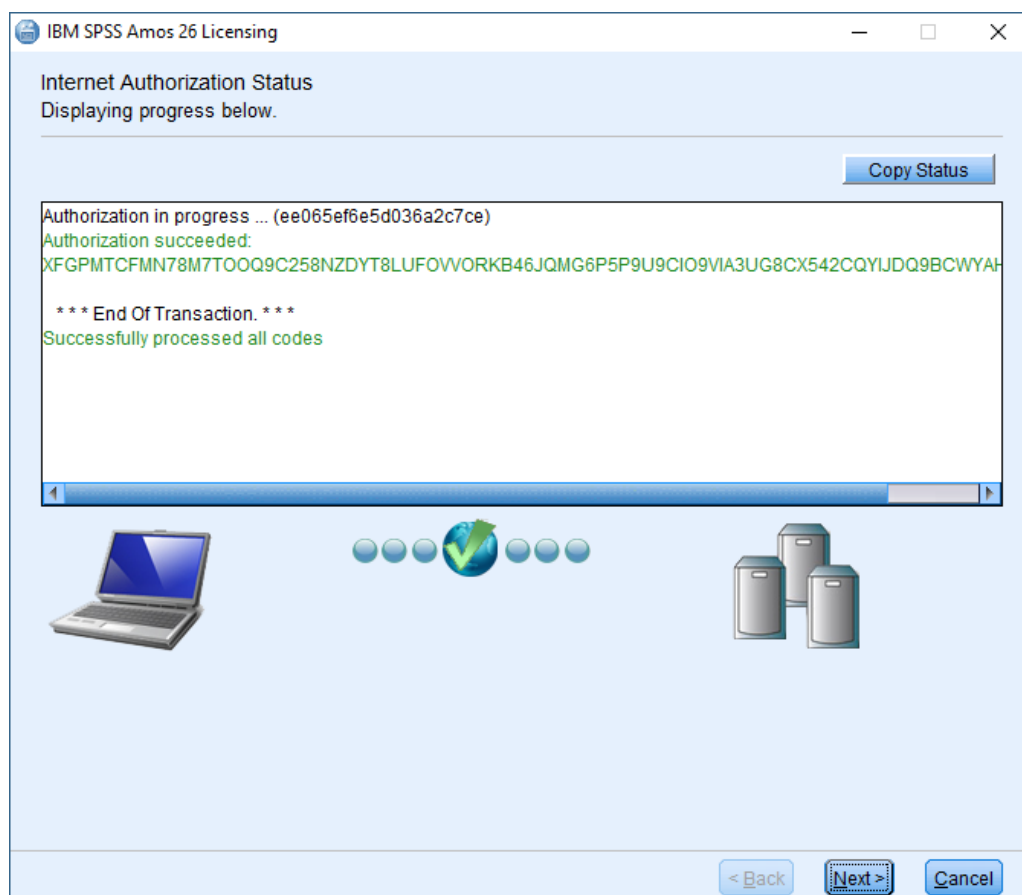
Click Next

Enter the serial number which is listed on the web page you downloaded the software from:

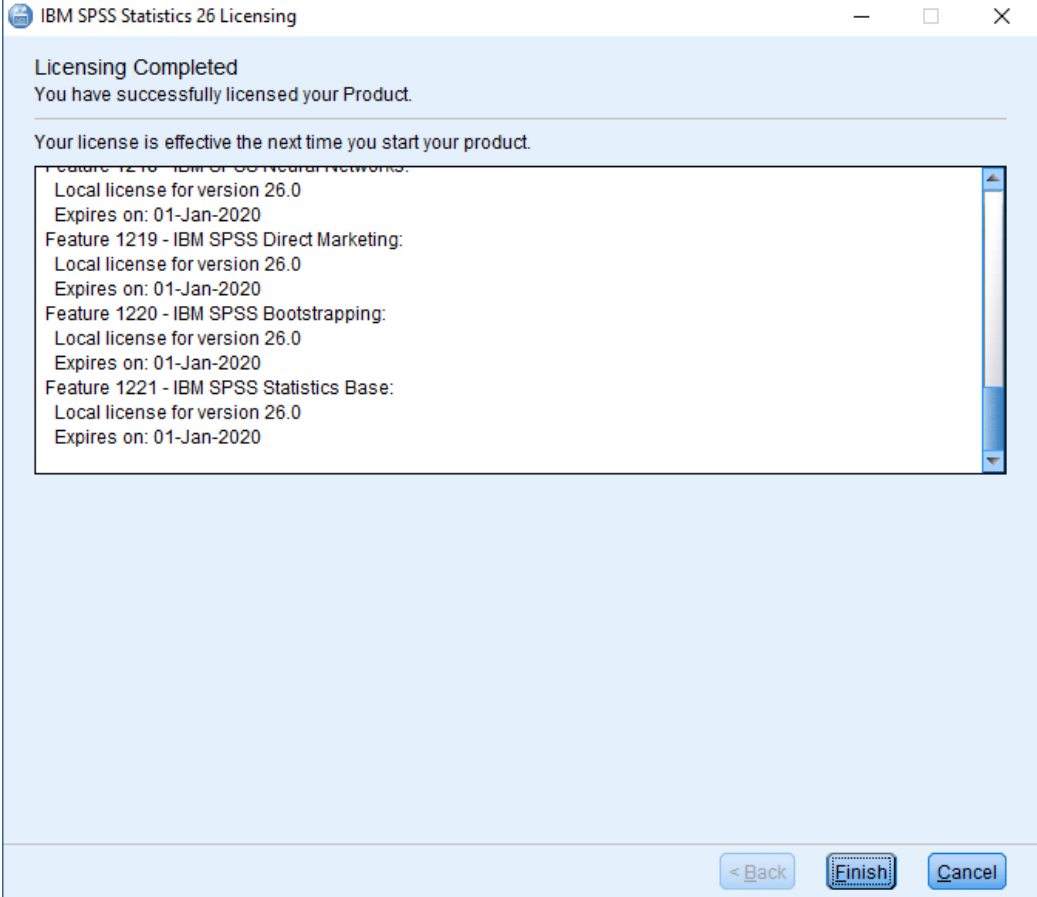
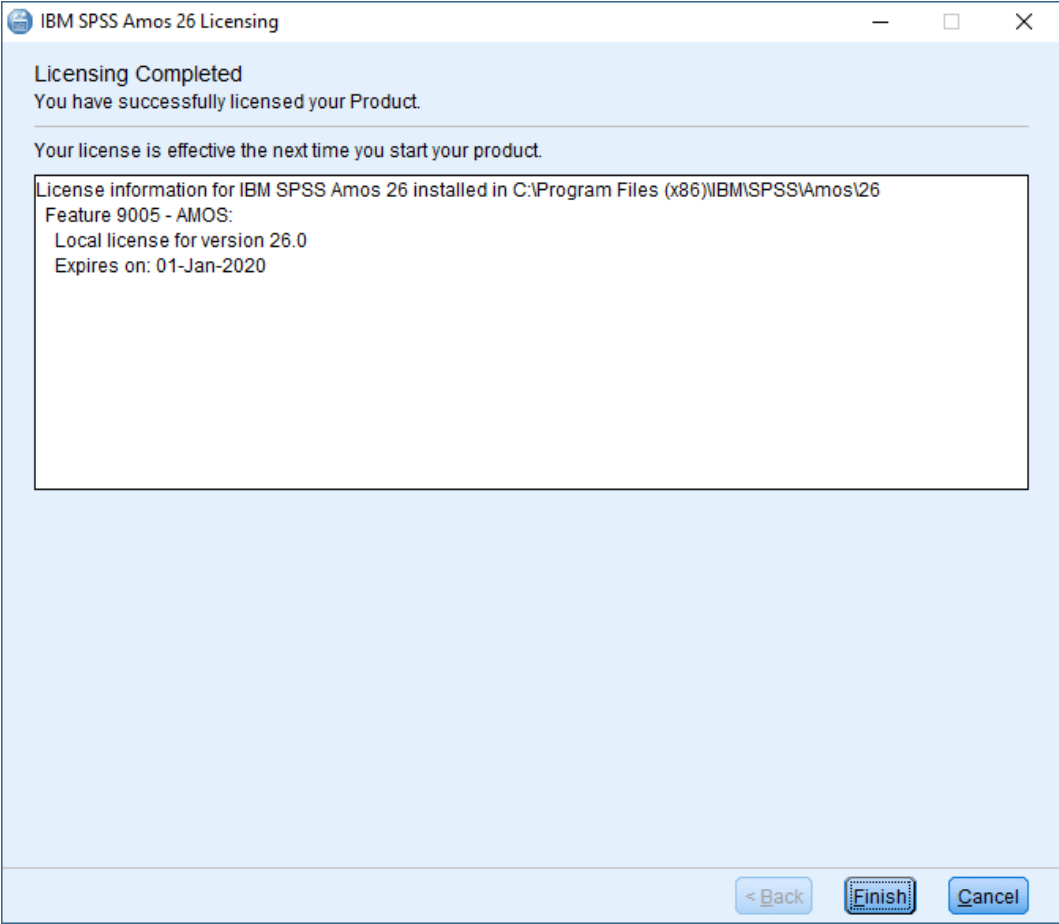
ee065ef6e5d036a2c7ce



Click Next



Click Next



Click Finish