



At a glance guide for international students

2017 entry



Liverpool John Moores University (LJMU) offers an exceptional student experience, founded on high quality teaching, ground-breaking research and extensive links with employers, entrepreneurs and business leaders.

The University was founded in 1823 and today has over c.22,000 students recruited from over 100 countries world-wide. Liverpool too is a world-class multi-cultural city, which welcomes and supports a diverse student community from all around the world. The city is integrally connected to and influenced by the University's research, scholarship and civic initiatives and offers students a rich cultural and social experience.

Choosing where and what to study as an international student is a life changing decision. Expert University staff are available to guide you through the next steps in the application process and to help ensure that you choose the degree that is best suited to your requirements and professional ambitions.

Ranked 5th for Hospitality, Leisure, Recreation and Tourism (The Times Good University Guide 2016) ■ **9th for General Engineering** (Guardian University Guide 2017) ■ **10th for Sport Science** (The Times Good University Guide 2016) ■ **38th for Business, Management and Marketing** (Guardian University Guide 2017)



Teaching excellence

- All undergraduate and postgraduate taught programmes are delivered by academics involved in innovative research and consultancy.
- This combination of academic expertise and ‘real world’ experience helps ensure that all degrees are kept up-to-date and secure accreditation by key professional bodies.
- The University has been awarded 9 National Teaching Fellowships from the Higher Education Academy in recognition of its outstanding teaching and learner support.



International Foundation Year courses



- International students have the option of completing degree preparation programmes at the University’s International Study Centre.
- These courses are managed and taught by Study Group, a world leader in education and training for international students, and offer direct progression onto a range of undergraduate degrees.
- English for Undergraduate and Postgraduate Studies courses are also available if you need to improve your English score.

English language requirements

- A very good level of English language competence is required to follow lectures, carry out background reading and research, write essays and dissertations at the University.
- Applicants must hold an internationally recognised English language qualification (such as IELTS, Pearson, etc) certified in the last two years.
- English for Undergraduate and Postgraduate Studies courses are available for students who need to improve their standard of English in order to meet their entry requirements.
- The minimum scores required by the University are listed below, though specific course requirements may differ.
 - International Foundation Year: 4.5 IELTS or equivalent
 - Undergraduate: 6.0 IELTS or equivalent
 - Postgraduate: 6.0 - 7.0 IELTS or equivalent

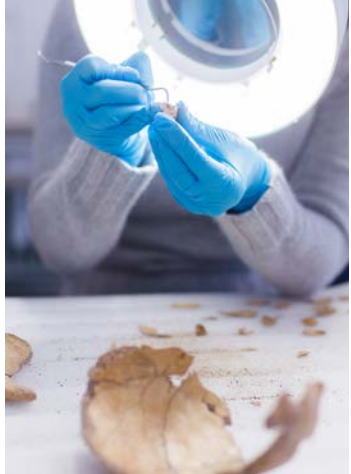


Graduate prospects

- 92% of undergraduate students are in work or further study, with 62% securing graduate-entry positions
- 98% of our postgraduate students are in work or further study, with 96% of those in work securing professional roles - that's 4% above the UK national average
- The University's unique World of Work Programme has been developed in partnership with FTSE 100 companies and leading business organisations. The Programme ensures that all undergraduates develop the experience, attributes and skills demanded by today's employers in all sectors of the economy.
- The British Council regards the World of Work Programme as a 'best practice' approach to employability.
- The University's World of Work Careers Centre provides expert careers advice and guidance as well as 'ready for work' training and master classes from industry leaders.
- A dedicated Centre for Entrepreneurship provides a supportive environment to help new businesses founded by students and graduates flourish and grow.
- The University is one of the UK's leading higher education institutions for interaction with business and the community. It is ranked in the top 20 UK universities for staff and graduate start-up companies and in the top 10 for spin-off companies.

HERE ARE JUST SOME OF OUR EMPLOYER PARTNERS:





Research

- The range of research opportunities in the University is considerable. From developing cutting edge new technology to detect brain tumours to ground-breaking studies on the impact of the recession in UK and European cities, the University's researchers are helping to inform public policy, shape new laws, transform lives and improve the environment.
- We are now ranked in the Research Quality Ranking, with 96% of research activity rated international quality or better.
 - 97% of research is rated world-leading or internationally important in our School of Sport and Exercise Sciences.
 - 99% of our physics-related research is world-leading or internationally important.
 - LJMU is now ranked 4th in the UK for both law and education-related research (Post-92 UK universities).
 - 95% of research by our School of Engineering, Technology and Maritime Operations is world leading, or recognised internationally.
 - 68% of our health-related research is world leading or internationally excellent.
 - Other research rated as internationally important or recognised internationally at LJMU:
 - Computing and Mathematical Sciences: (94%)
 - Art and Design (History, Practice and Theory): (85%)
 - Built Environment: (83%)

- LJMU is also ranked in the top 25 English universities for PhD completion rates and there are over 500 research students currently enrolled at the University.

Facilities and resources

- The University has invested over £160 million over the last 10 years in new capital projects and modernising existing buildings and facilities.
- Each Campus has its own Library and collections (both print and electronic) specific to the academic needs of the Faculties and students it supports.
- The two city-centre based Libraries are open 24/7 during semesters.
- Facilities are designed to replicate 'world of work' environments and include science, technology and engineering laboratories, broadcast quality TV and radio studios, a forensic scene-of-crime lab, ship simulators, theatre and rehearsal facilities, a mock courtroom, clinical practice suites, art galleries and much more.
- All students have free access to sports facilities across Liverpool, including top-of-the-range gym equipment and fitness suites, tennis, squash and badminton courts, an Olympic-sized swimming pool, and two golf courses.



Living in Liverpool

- Liverpool is ranked in the top ten cities to visit in the world by *Rough Guides (2014)*.
- **It is one of the most affordable student cities in the UK. It is also a safe, multi-racial and multi-cultural city supporting a diverse range of religions and communities.**
- All new international students are guaranteed a place in high quality University-approved student accommodation, with 24-hour onsite security, and located close to LJMU buildings and libraries.
- **The University has close connections with leading cultural organisations in the city: Tate Liverpool, the Liverpool Philharmonic and its world-famous orchestra, the Everyman and Playhouse and Royal Court Theatres and Liverpool Biennial, one of Europe's largest arts festivals.**
- The city's John Lennon Airport connects to more than 650 destinations worldwide and Liverpool is also only 2 hours away from London by train.

Student support

- All students are assigned a Personal Tutor at the start of their degree.
- **The University's dedicated International Student Advisors are based in the Student Advice and Wellbeing Team.**
- Free English Language Support and Study Skills, and Maths and Statistics workshops are available throughout your studies.
- **Free and confidential counselling service for all students.**

FEES

You are advised to contact the University for up-to-date fees information. In addition to tuition fees you must also budget for living costs (accommodation, food, clothing, books, travel, etc).

English for Undergraduate and Postgraduate Studies	www.ljmuisc.com/fees
English for PhD studies	www.ljmuisc.com/fees
International Foundation Year programme: <ul style="list-style-type: none">■ Business, Law and Social Studies■ Engineering and Science	www.ljmuisc.com/fees
Internal Year One programme: <ul style="list-style-type: none">■ Business■ Engineering	www.ljmuisc.com/fees
Pre-Masters programme	www.ljmuisc.com/fees
Class-based undergraduate and postgraduate programmes	www.ljmu.ac.uk/discover/fees-and-finance
Laboratory-based undergraduate and postgraduate programmes	www.ljmu.ac.uk/discover/fees-and-finance
MBA, MSc Engineering, MSc Maritime and MBA Maritime Management programmes	www.ljmu.ac.uk/discover/fees-and-finance
Research degrees (MPhil/PhD)	www.ljmu.ac.uk/discover/fees-and-finance
Distance learning programmes	www.ljmu.ac.uk/discover/fees-and-finance

DEPOSITS International applicants will need to pay a minimum deposit of £2,000 before a Confirmation of Acceptance for Studies (CAS) can be issued. You will be able to pay your deposit via LJMU's on-line payment system. You will need your LJMU Applicant ID number, and course start date (month and year) in order to complete this transaction. Once you pay your deposit a CAS number will be produced so that you can apply for your visa at LJMU. For further details on LJMU's deposit policy, including details on refunds and exceptions, go to: ljmu.ac.uk/international



SCHOLARSHIPS

LJMU offers a range of prestigious international scholarships. The scholarships are available to self-funding applicants who have accepted an offer to study at LJMU. For further information and to apply please visit

ljmu.ac.uk/international

Title	Qualification	UCAS Code	Typical entry tariff
Accounting and Finance	BSc (Hons)	N420	112
Animal Behaviour	BSc (Hons)	C301	112
Applied Chemistry	BSc (Hons)	C368	104
Applied Chemistry	MChem (Hons)	F1F5	112
Applied Mathematics with Engineering	BEng (Hons)	GG16	112
Applied Psychology	BSc (Hons)	C870	112
Applied Sport Psychology	BSc (Hons)	C890	112
Architectural Engineering	BEng (Hons)	2B78	112
Architectural Engineering	MEng (Hons)	2D36	128
Architectural Technology	BSc (Hons)	K130	104
Architecture	BA (Hons)	K100	128
Astrophysics MPhys	MPhys (Hons)	F521	see website
Audio and Music Production	BSc (Hons)	J930	112
Biochemistry	BSc (Hons)	C700	104
Biology	BSc (Hons)	C100	112
Biomedical Science	BSc (Hons)	B940	112
Building Services Engineering	BEng (Hons)	K200	112
Building Services Engineering	MEng (Hons)	K290	128
Building Services Engineering Project Management	BSc (Hons)	KN2F	104
Building Surveying	BSc (Hons)	K230	112
Business and Human Resource (part-time)	BA (Hons)	LJMPT-BUSHRM	Not applicable
Business and Public Relations	BA (Hons)	NP12	112
Business Management	BA (Hons)	N200	112
Business Studies	BA (Hons)	N100	112
Applied Chemistry	BSc (Hons)	C368	104
Applied Chemistry	MChem (Hons)	F1F5	112
Civil and Environmental Engineering	MEng (Hons)	T369	128
Civil and Offshore Engineering	MEng (Hons)	T457	128
Civil and Structural Engineering	MEng (Hons)	6A12	128
Civil and Transportation Engineering	MEng (Hons)	T337	128
Civil Engineering	BEng (Hons)	H200	112
Civil Engineering	MEng (Hons)	H202	128
Civil Engineering	HNC	H203	80
Civil Engineering and Architecture	MEng (Hons)	H2KC	128
Civil Engineering and Construction Management	MEng (Hons)	H2K2	128
Computer Forensics	BSc (Hons)	G550	112
Computer Forensics	MComp (Hons)	C378	120
Computer Games Development	BSc (Hons)	G450	112
Computer Games Development	MComp (Hons)	C468	120
Computer Networks	BSc (Hons)	JI20	112
Computer Networks	MComp (Hons)	JI12	120
Computer Science	BSc (Hons)	C558	112
Computer Science	MComp (Hons)	C587	120
Computer Security	BSc (Hons)	I990	112
Computer Security	MComp (Hons)	C369	120
Computer Security with Foundation Year	BSc (Hons)	3V18	88
Computer Studies	BSc (Hons)	G401	112
Computer Studies	MComp (Hons)	C687	120
Computer Studies with Foundation Year	BSc (Hons)	3L17	88
Computer Technology	BEng (Hons)	H610	112
Computer Technology	MEng (Hons)	C478	128
Construction and Property	HNC	K222	80
Construction Management	BSc (Hons)	K220	104
Control and Automation Engineering	BEng (Hons)	D367	112
Control and Automation Engineering	MEng (Hons)	D267	128
Creative Writing	BA (Hons)	W800	104
Creative Writing and Film Studies	BA (Hons)	WW86	112
Criminal Justice	BA (Hons)	M291	112
Criminology	BA (Hons)	M212	112
Criminology and Psychology	BA (Hons)	MC2W	112
Criminology and Sociology	BA (Hons)	ML23	104
Dance Practices	BA (Hons)	W500	112
Data Science	BSc (Hons)	GG10	112
Data Science	MComp (Hons)	GG11	120
Disability Sport Coaching and Development	FDA	LJMPT-ISD	Not applicable
Drama	BA (Hons)	W400	104
Drama and Creative Writing	BA (Hons)	WW48	104
Drama and English	BA (Hons)	QW34	104
Early Childhood Studies	BA (Hons)	XL35	112
Education and European Studies	BA (Hons)	G487	112
Education Studies and Early Years	BA (Hons)	XL30	112
Education Studies and Special and Inclusive Needs	BA (Hons)	XX31	112
Electrical and Electronic Engineering	BEng (Hons)	H600	112
Electrical and Electronic Engineering	MEng (Hons)	H602	128
Electrical Power Engineering	BEng (Hons)	P148	112
Electrical Power Engineering	MEng (Hons)	7Q23	128
Electronic Engineering	BEng (Hons)	D385	112
Electronic Engineering	MEng (Hons)	D285	128
English	BA (Hons)	O300	104
English and Creative Writing	BA (Hons)	WQ83	104
English and Media and Cultural Studies	BA (Hons)	PQ33	104
Environmental Health	BSc (Hons)	B911	112
Events Management	BA (Hons)	N820	112

Title	Qualification	UCAS Code	Typical entry tariff
Facilities Management	BSc (Hons)	N2N2	112
Fashion	BA (Hons)	W2H0	112
Film Studies	BA (Hons)	P303	112
Fine Art	BA (Hons)	W100	112
Food Development and Nutrition	BSc (Hons)	D690	104
Forensic Anthropology	BSc (Hons)	FL4P	112
Forensic Psychology and Criminal Justice	BSc (Hons)	CM82	128
Forensic Science	BSc (Hons)	F410	112
Geography	BSc (Hons)	F800	112
Graphic Design and Illustration	BA (Hons)	W210	112
Health and Social Care for Individuals, Families and Communities	BA (Hons)	L512	112
History	BA (Hons)	V100	112
History and English	BA (Hons)	QV31	104
History of Art	BA (Hons)	VP31	112
Human Resource Management	BA (Hons)	N600	104
International Journalism	BA (Hons)	P510	104
International Tourism Management	BSc (Hons)	NN28	112
Journalism	BA (Hons)	P500	112
Law	LLB (Hons)	M100	120
Law (part-time)	LLB (Hons)	LJMUPT-LLB	Not applicable
Law and Criminal Justice	LLB (Hons)	MM12	120
Learning, Development and Support	BA (Hons)	X220	Not applicable
Management, Transport and Logistics	BSc (Hons)	NK24	112
Manufacturing Systems Engineering	BEng (Hons)	Not applicable	112
Manufacturing Systems Engineering	MEng (Hons)	Not applicable	128
Marine Engineering	BEng (Hons)	JJ67	112
Marine Engineering	MEng (Hons)	JJ60	128
Marine Operations	FdSc	J615	88
Maritime Business and Management	BSc (Hons)	N910	112
Marketing	BA (Hons)	N500	112
Mathematics	BSc (Hons)	GN11	112
Applied Mathematics with Engineering	BEng (Hons)	GG16	112
Mathematics and Education Studies	BSc (Hons)	XG30	112
Mathematics with Data Science	BSc (Hons)	GG14	112
Mathematics with Finance	BSc (Hons)	GN13	112
Mechanical and Manufacturing Engineering	BEng (Hons)	D594	112
Mechanical and Manufacturing Engineering	MEng (Hons)	4S13	128
Mechanical and Marine Engineering	BEng (Hons)	H390	112
Mechanical and Marine Engineering	MEng (Hons)	H350	128
Mechanical Engineering	BEng (Hons)	H301	112
Mechanical Engineering	MEng (Hons)	H300	128
Mechanical Engineering with Management	BEng (Hons)	P348	112
Mechanical Engineering with Management	MEng (Hons)	2L46	128
Media Production	BA (Hons)	P300	104
Media, Culture, Communication	BA (Hons)	LP63	104
Midwifery	BA (Hons) with RNS	B720	128
Multimedia Computing	BSc (Hons)	GG54	112
Multimedia Computing	MComp (Hons)	C268	120
Nautical Science	BSc (Hons)	J600	112
Nursing with Registered Nurse Status (Adult)	BSc (Hons) with RNS	B470	112
Nursing with Registered Nurse Status (Child)	BSc (Hons) with RNS	B730	120
Nursing with Registered Nurse Status (Mental Health)	BSc (Hons) with RNS	B760	112
Nutrition	BSc (Hons)	DB64	104
Outdoor Education	BSc (Hons)	X9F8	104
Paramedic Practice	DipHE	B781	112
Pharmaceutical Science	BSc (Hons)	F195	112
Pharmacy	MPharm (Hons)	B201	120
Physical Education	BA (Hons)	4K59	112
Physics with Astronomy	BSc (Hons)	F3F5	see website
Policing Studies	FDA	L232	96
Policing Studies	BA (Hons)	L231	104
Policing Studies and Computer Forensics	BSc (Hons)	I2M5	104
Policing Studies and Cyber Crime	BSc (Hons)	M900	104
Policing Studies and Evidence-Based Practice	BSc (Hons)	M901	104
Policing Studies and Forensics	BSc (Hons)	MF11	104
Policing Studies and Forensic Psychology	BSc (Hons)	MC11	104
Primary Education with recommendation for Qualified Teacher Status (QTS)	BA (Hons) with QTS	X120	120
Public Health	BSc (Hons)	LL51	112
Product Design Engineering	BSc (Hons)	H772	112
Applied Psychology	BSc (Hons)	C870	112
Quantity Surveying	BSc (Hons)	K242	112
Real Estate	BSc (Hons)	NN21	112
Science and Football	BSc (Hons)	CXQ3	112
Sociology	BA (Hons)	L300	104
Software Engineering	BSc (Hons)	S269	112
Software Engineering	MComp (Hons)	G600	120
Sport and Exercise Science	BSc (Hons)	G600	120
Sport and Nutrition for Health	BSc (Hons)	5H88	112
Sport Business	BA (Hons)	7R21	112
Sport Coaching	BSc (Hons)	XC16	112
Sport Development	BA (Hons)	3Q79	112
Sports Journalism	BA (Hons)	PP55	112
Applied Sport Psychology	BSc (Hons)	C890	112
Wildlife Conservation	BSc (Hons)	C930	112
Zoology	BSc (Hons)	C300	112

Postgraduate taught courses

Please go to www.ljmu.ac.uk/courses/ for the most up-to-date course information.

Advanced Computer Studies

Advanced Policing

Analytical Forensic Science

Applied Facilities Management

Architectural Engineering

Architecture

Art and Design

Art in Science

Astrophysics (Distance Learning)

Bioarchaeology

Cities, Culture and Creativity

Civil Engineering

Clinical Exercise Physiology

Commercial Building Surveying

Commercial Property Management

Computer Forensics

Computer Network Security

Computer Science

Computing and Information Systems

Computing by Distance Learning

Construction Project Management

Contemporary Art

Criminal Justice

Critical Social Science

Cyber Security

Dance Practices

Digital Literacies and Learning

Digital Marketing

Drone Technology and Applications

Drug Discovery and Design

Education Globalisation and Social Change

Electrical Power and Control Engineering

English

Entrepreneurship

Exhibition Studies

Fashion Innovation and Realisation

Financial Management

Fine Art

Forensic Anthropology

Forensic Bioscience

Global Crime, Justice and Security

Graphic Design and Illustration

Health Psychology

Human Resource Management

Industrial Biotechnology

Initial Teacher Training courses

Integrated Building Information Management (BIM)

International and Transnational Policing

International Approaches to Early Childhood Education

International Business and Management

International Business Corporate and Finance Law

International Events Management

International Human Resource Management

International Journalism

International News Journalism

International Public Health

International Public Relations

International Tourism Management

International Transport, Trade and Logistics

LLM Legal Practice

Legal Practice Course LPC

Logistics and Supply Chain Management

Management

Management and Digital Business

Manufacturing Engineering

Marine and Offshore Engineering

Maritime Operations Management

Mass Communications

Mechanical Engineering

MBA

Microelectronic System Design

Modern History

Observational Astrophysics

Pharmaceutical Manufacture and Quality Control

Policing and Criminal Investigation

Policing and Cyber Crime

Policing, Port and Maritime Security

Port Management

Postgraduate Research Opportunities

Primate Behaviour and Conservation

Professional Doctorate in Applied Sport and Exercise Science

Professional Doctorate in Health Psychology

Professional Doctorate in Sport and Exercise Psychology

Project Management

Public Health

Public Health 'Addictions'

Public Health Nutrition

Public Relations

Qualifying Law

Quantity Surveying and Commercial Management

School Direct Initial Teacher Training with QTS

Smart Technologies for Infrastructure and Buildings

Software Engineering

Special Educational Needs

Sport and Clinical Biomechanics

Sport and Exercise Physiology

Sport Coaching

Sport Nutrition

Sports Psychology

Telecommunications Engineering

Urban Design

Virology

Water, Energy and the Environment

Wildlife Conservation and UAV Technology

Continuing Professional Development Courses

Top-up Degree: Nursing (International)

Top Up Degree: Paramedic Science (International)



LJMU is located in the heart of the city of Liverpool. One of the best connected cities in the UK, Liverpool's excellent transport network provides easy access to all UK, European and international destinations. Liverpool is just two hours away from London by rail. The city's Liverpool John Lennon Airport offers flights from various parts of Europe while Manchester Airport, around 45 minutes from Liverpool, operates flights from around the world. Liverpool is also at the hub of the UK motorway network – linking to the M6 via M62, M57, M58, M56 and M53 – one of the most comprehensive motorway networks in the country.

MAKING YOUR APPLICATION

You are advised to submit your application as early as possible in the academic year before you want to start studying at LJMU. The application process differs depending on whether you apply for an undergraduate or postgraduate course. Please make sure that you follow the correct procedure for your chosen course:

- **Undergraduate** [BA (Hons), BSc (Hons), MEng (Hons), BEng (Hons), MComp (Hons), LLB (Hons)]: Applications to study at LJMU are submitted via the Universities and Colleges Admissions Service (UCAS). For further details go to: ucas.com
- **English for Undergraduate and Postgraduate Studies courses:** Please go to ljmuisc.com for information on how to apply
- **International Foundation Year courses:** Please go to ljmuisc.com for information on how to apply
- **Postgraduate taught degrees** [MA, MSc, MRes, LLM]: You should apply direct to LJMU using our online application form. Please go to ljmu.ac.uk/study/international-students and click on the 'How to Apply' link for more details
- **Postgraduate research degrees** [MPhil, PhD]: Please go to ljmu.ac.uk/research and click on the 'Current research opportunities' for the latest doctoral opportunities and application guidance

If you have any queries relating to the application process, please contact the University for advice and guidance (tel: **+44(0)151 231 5090**, email: Int-Admissions@ljmu.ac.uk). You can also come and speak to LJMU representatives at recruitment events and fairs in your country. For more details, go to: ljmu.ac.uk/study/international-students

Contact us

For course advice and general guidance:

Email: international@ljmu.ac.uk

For assistance with the application process and admissions:

Email: Int-Admissions@ljmu.ac.uk

Tel: **+44 (0) 151 231 5090**

Web: www.ljmu.ac.uk/international



twitter.com/ljmu



[youtube.com/
ljmutv](http://youtube.com/ljmutv)



[facebook.com/
liverpooljohn
mooreuniversity](https://facebook.com/liverpooljohnmooreuniversity)